



BIRDS
CONNECT
SEATTLE



Northern Shoveler | Greg Courtney | Audubon Photography Awards

2024-25 Annual Impact Report

EARTHCARE NORTHWEST



A Message to Our Members From Claire Catania, Executive Director

As we reflect on another year passed, I want to extend my deepest gratitude to you. This year was a milestone in our storied history, marked by the exciting relocation of our headquarters into the heart of downtown Seattle.

More than just a space, our headquarters are a launching point for deepening our local and regional conservation impact and engaging more people in our mission in the weeks, months, and years ahead.

We remain rooted in our values wherever we are: delivering high-quality programs, fostering connection to birds through outdoor experiences, and inspiring lasting conservation action by our community. Each month brought new accomplishments, in response to challenges that birds are facing, made possible because of you.

Thank you for being with us on this journey. We're proud to share the highlights of 2025, and we're already looking ahead with hope and determination.



BIRDS CONNECT SEATTLE

616 Olive Way

Seattle, WA 98101

birdsconnectsea.org

*This issue was delivered to member homes mid-December 2025.
Renew or join today to make sure you receive the next issue.*

LOOKING BACK AT 2025:

Conservation Easement Protects Habitat

As part of a landmark real estate transaction, we secured one of the region's first urban conservation easements, permanently protecting mature trees and bird habitat at our former headquarters. This innovative partnership ensures lasting benefits for urban wildlife and demonstrates how conservation can be meaningfully integrated into city development.



FEB



Reaching Future Bird Advocates

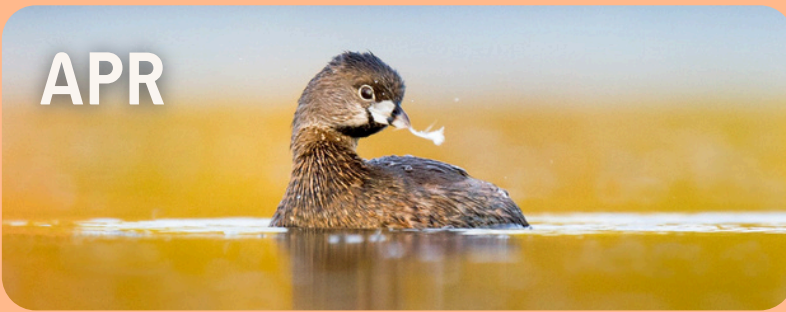
Throughout the year, we attend schools, science nights, garden clubs, puffin cruises, festivals, and other community events—sharing our love of birds and conservation with curious minds of all ages across the region. This year, we attended 45 events and shared the joy of birds with more than 1,940 people.

Protecting the Magnuson Park Wetlands

Last spring, we launched advocacy efforts to protect the restored Magnuson Park wetlands from the impacts of a noisy, large-scale development. We are working with our supporters and Seattle Parks and Recreation to secure an alternative site that preserves this essential wildlife habitat and valued recreation area.



APR



Bird University & Classes

Through Bird University and our adult classes, 2,926 learners explored the fascinating world of birds and their habitats—both in the classroom and outdoors. Students continue to find inspiration in topics ranging from block printing and birding by ear to species-specific courses.

Collision Monitoring Saves Birds at SAAM

Thanks to data collected by volunteer monitors, the Seattle Asian Art Museum has installed bird-safe window film at a known bird-collision hot spot—a major win that will save countless birds. This milestone showcases the impact of community science and the strength of proactive partnerships, serving as a model for future collaborations that protect wildlife.



JUN



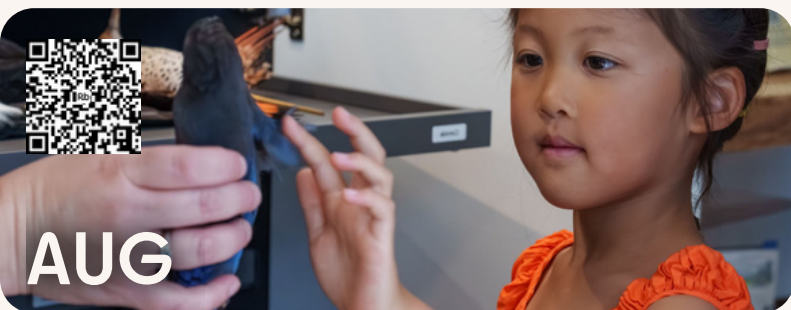
Nature Camp Inspires Children

Over 210 children and teens kicked off summer at Nature Camp—exploring bugs, forests, beaches, and birds through hands-on experiences, field trips, and creative learning designed to inspire the next generation of nature stewards.

A YEAR FOR THE BIRDS

Grand Opening Downtown

We officially opened our new downtown headquarters on July 23, celebrating with a ribbon-cutting and a visit from some very special bird guests. Our new nature-themed hub features interactive exhibits, gifts and optics for purchase, bird-themed programming, and opportunities for conservation action.



Bird Skins and Exhibits Draw Visitors

Visitors delight in touching and examining more than 600 preserved bird specimens, including talons, bills, wings, and whole birds. Our volunteer docents and staff enjoy speaking with the public about our exhibits and getting them excited about birds and their many fascinating adaptations.

Seattle's Comprehensive Plan

We successfully influenced Seattle's Comprehensive Plan update, with 10 of our 36 policy recommendations (all focused on protecting urban biodiversity) adopted into the Mayor's draft. This marks a major win for bird-friendly city planning, including the introduction of new language to mitigate hazards to wildlife.



Shopping Benefits Local Birds

Our downtown shop unveiled fresh, bird-themed merchandise, including the popular pigeon hair clips, a wide selection of binoculars, and the latest field guides and birding memoirs. These additions offer stylish ways to support our mission and connect with fellow bird enthusiasts.

Volunteers Lead 100+ Bird Outings

Volunteers end the year with 177 outings and field trips, reaching more than 2,170 people. These outings welcome birders of all backgrounds to connect and learn together in nature safely. Come join us in the new year to make new friends or discover your spark bird!



CBC Accessibility and Inclusivity

Over the last two years, we've invested in our local annual Christmas Bird Count (CBC) to make it more inclusive and accessible by organizing shorter routes, affinity groups for young adults, BIPOC, and LGBTQIA+ participants, and leadership and training opportunities. The data collected helps scientists understand local and national bird population trends.

Board

Megan Atcheson
Brett Eaton
Anthony Floyd, President
Andres Hiltbrunner, Treasurer
Jim Kelly, Secretary
Wendy Lam
Christine Lefkarites White
Melissa Mark
Paul Meijer
Sara Rocero
Sharon Wada, Vice President

Staff

Hanae Bettencourt
Claire Catania
Ella Denman
Sarah Hankins
Mechio Hardeman
Gina Kim
Kelly Metcalfe
Joshua Morris
Cody Pender
Carol Roll
Christine Scheele
Ellie Yamanaka
Charlie Yanny

Contributors

Writing and Photography

Eduardo Baena
Brian Caldwell
Elaine Chuang
Greg Courtney
Raymond Hennessy
Satheesh Rajh
Carol Roll
Sharon Wada
Doug Plummer

Read more conservation
stories on our blog:
birdsconnectsea.org/news



@birdsconnectsea
birdsconnectsea.org

*Printed on FSC paper with
vegetable-based inks*

Member Specials for the Holidays

Give the gift of birds this season and enjoy special discounts for you, or for another nature-lover in your life.

- 10% all regularly priced retail items, including optics, books, and gifts
- 20% discount on classes
- Gift cards
- Gift memberships
- Personalized engraved feather on the Feathers for the Future sculpture



Spotted Towhee | Satheesh Rajh

Financial Overview

for Fiscal Year of July 1, 2024 to June 30, 2025

To our dedicated members, thank you for investing in our mission to advocate and organize for cities where people and birds thrive. As a local, independent nonprofit organization, Birds Connect Seattle relies on diverse funding sources, especially the generosity of our community, to fuel our programs.

PROFIT & LOSS STATEMENT

REVENUE

Membership Dues	\$118,511
Contributions	\$397,427
Grants & Restricted	\$92,803
Bequests	\$268,839
Sales (net)	\$94,978
Program Fees	\$157,368
Investment Release	\$89,088
Other Revenue	\$6,795
TOTAL REVENUE	\$1,225,810

EXPENSES

Programs	\$803,324
Administration	\$331,651
Funding the Mission	\$221,954
TOTAL EXPENSES	\$1,356,929

These numbers reflect the unaudited 24/25 financial statement. Audit in progress as of December 2025. Complete financial statements including 990 and audited financial statements available upon request.

BALANCE SHEET

ASSETS

Cash & Cash Equivalents	\$1,831,778
Restrict Investments & Endow	\$3,052,541
Receivables	\$2,680
Merchandise Inventory	\$253,351
Prepaid Expenses	\$13,945
Land, Facilities, & Equipment	\$39,420
Other	\$866,901
TOTAL ASSETS	\$6,060,616

LIABILITIES & NET ASSETS

Liabilities

Accounts Payable	\$57,387
Accrued Expenses	\$89,245
Deferred Revenue	\$81,210
Lease	\$874,450
Total Liabilities	\$1,102,292

Net Assets

Without Restrictions	\$2,119,277
With Restrictions	\$2,839,047
Total Net Assets	\$4,958,324

TOTAL LIABILITIES & NET ASSETS	\$6,060,616
---	--------------------



Snow Geese | Eduardo Baena